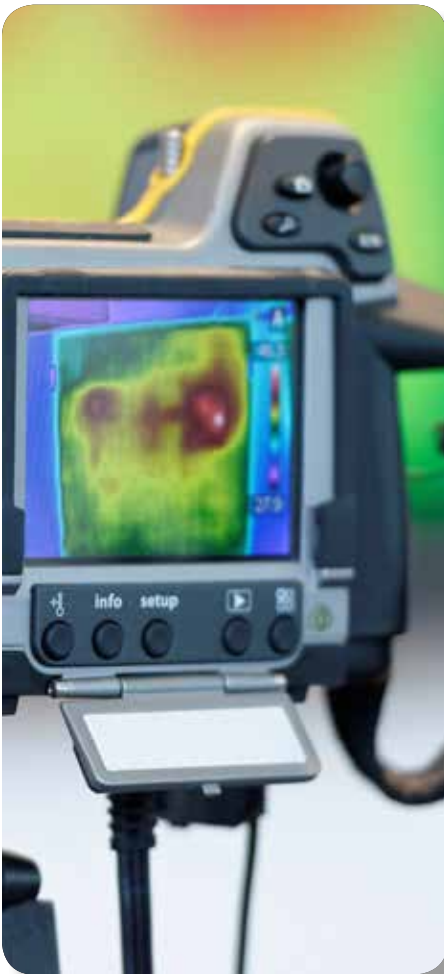


92ML

Thermally Conductive MultiLayerable Epoxy Laminate and Prepreg



Arlon 92ML ceramic filled thermally conductive multifunctional epoxy laminate and prepreg products provide a cost-effective, lead-free solder compatible, system with enhanced coefficient of thermal conductivity ($T_c=2.0 \text{ W/m-K}$) for multilayer PWB application that require thermal management throughout the board. 92ML has a UL-94 V0 halogen-free flame retardant system that is compliant with ROHS and WEEE and IPC-4101 requirements.



Features:

- Thermal Conductivity (T_c) 2.0 W/m-K , 6-8x that of FR-4, reduces hot-spots and dependence on thermal vias and heat-sinks to dissipate heat
- Glass Transition Temperature 160°C provides excellent plated through hole reliability, lead-free solder application
- Decomposition temperature $>350^\circ\text{C}$ is ideally suited for lead-free solder processing and offers significant improvement over other thermally conductive laminate materials
- Coefficient of Thermal Expansion close to that of Copper and Aluminum for planar stability during process
- Best-in-class thermal performance with $T_{260} > 60$ minutes, $T_{280} > 15$ minutes and $T_{300} > 5$ minutes.
- Electrical Strength >1000 Volts/mil for use in high power handling Applications
- Engineered for use with metal backing for producing Metal-Clad PCBs
- Meets the flammability requirements of UL-94 V-0
- Halogen-free per IPC-4101 specifications
- ROHS and WEEE compliant

Typical Applications:

- High Brightness LED's
- DC-DC Power Converters
- Automotive Electronics
- Electronic designs with limited thermal management alternatives

ARLON

TECHNOLOGY ENABLING INNOVATION

Typical Properties:

Property	Units	Value	Test Method
1. Electrical Properties			
Dielectric Constant			
@ 1 MHz	-	5.2	IPC TM-650 2.5.5.3
@ 1 GHz	-	4.9	IPC TM-650 2.5.5.9
Dissipation Factor			
@ 1 MHz	-	0.013	IPC TM-650 2.5.5.3
@ 1 GHz	-		IPC TM-650 2.5.5.9
Volume Resistivity			
C96/35/90	MΩ-cm	1.2 x 10 ⁹	IPC TM-650 2.5.17.1
E24/125	MΩ-cm	1.5 x 10 ⁹	IPC TM-650 2.5.17.1
Surface Resistivity			
C96/35/90	MΩ	2.8 x 10 ⁸	IPC TM-650 2.5.17.1
E24/125	MΩ	4.4 x 10 ⁸	IPC TM-650 2.5.17.1
Electrical Strength	Volts/mil (kV/mm)	>1000	IPC TM-650 2.5.6.2
Dielectric Breakdown	kV	>50	IPC TM-650 2.5.6
Arc Resistance	sec	>150	IPC TM-650 2.5.1
Dielectric Withstand Voltage (HiPot)	VDC	>5000	IPC TM-650 2.5.7.2
2. Thermal Properties			
Glass Transition Temperature (Tg)			
DSC	°C	160	IPC TM-650 2.4.25
Decomposition Temperature (Td)			
Initial	°C	340	IPC TM-650 2.3.41
5%	°C	400	IPC TM-650 2.3.41
T260	min	>60	IPC TM-650 2.4.24.1
T288	min	>15	IPC TM-650 2.4.24.1
T300	min	>5	IPC TM-650 2.4.24.1
CTE (X,Y)	ppm/°C	19-20	IPC TM-650 2.4.41
CTE (Z)			
< Tg	ppm/°C	22	IPC TM-650 2.4.24
> Tg	ppm/°C	175	IPC TM-650 2.4.24
z-axis Expansion (50-260°C)	%	1.8	IPC TM-650 2.4.24
3. Mechanical Properties			
Peel Strength to Copper (1 oz/35 micron)			
After Thermal Stress	lb/in (N/mm)	5.0 (0.88)	IPC TM-650 2.4.8
At Elevated Temperatures	lb/in (N/mm)		IPC TM-650 2.4.8.2
After Process Solutions	lb/in (N/mm)	4.8 (0.84)	IPC TM-650 2.4.8
Young's Modulus	Mpsi (GPa)	2.6 (18)	IPC TM-650 2.4.18.3
Flexural Strength	kpsi (MPa)	26.1 (180)	IPC TM-650 2.4.4
Tensile Strength	kpsi (MPa)	8.7 (60)	IPC TM-650 2.4.18.3
Compressive Modulus	kpsi (MPa)		ASTM D-695
4. Physical Properties			
Water Absorption	%	0.12	IPC TM-650 2.6.2.1
Specific Gravity	g/cm ³	2.2	ASTM D792 Method A
Thermal Conductivity-Z-Axis	W/mK	2	ASTM E1461
Thermal Conductivity - X/Y-Axis	W/mK	3.5	ASTM E1461
Flammability	class	V-0	UL-94

Availability:

Arlon Part Number	Glass Style	Approx Resin %	Nominal Press Thickness (mils)	Notes/Applications
92ML0488	104	88	3.2	Multilayer
92ML0690	106	90	4.2	Multilayer
92ML8085	1080	85	6.0	Multilayer

Laminate available in a wide variety of thicknesses with 1/2, 1 or 2 oz copper. Inquire about Aluminum, Copper or Brass plate availability.

Recommended Process Conditions:

Process inner-layers through develop, etch, and strip using standard industry practices. Bake inner layers in a rack for 30 minutes at 107°C - 121°C (225°F - 250°F) immediately prior to lay-up. Vacuum desiccate the prepreg for 8 - 12 hours prior to lamination.

Lamination Cycle:

- 1) Control the heat rise to 5°C - 7°C (9°F - 12°F) per minute between 82°C and 121°C (180°F and 280°F)
- 2) Starting point laminating pressure for 92ML for standard panel sizes are as follows:

Panel Size		Pressure	
in	cm	psi	kg/cm ²
12 x 18	30 x 40	250-300	17-21
18 x 24	40 x 61	300-350	21-24

- 3) Product temperature at start of cure = 182°C (360°F).
- 4) Cure time at temperature = 90 minutes
- 5) Cool down under pressure at ≤ 5°C/min (10°F/min)

Drill at 350 SFM. Undercut bits are recommended for vias 0.018" and smaller

De-smear using alkaline permanganate or plasma with settings appropriate for multifunctional epoxy.

Conventional plating processes are compatible with 92ML Standard profiling parameters may be used.

Bake for 2 hours at 121°C (250°F) prior to solder reflow or HASL

*Typical values of thermal conductivity for 92ML0485 are 1.6-1.7 W/mK
Optimal processing requirements may vary depending on specific equipment and operating conditions.
These recommendations are offered only as a starting point.



TECHNOLOGY ENABLING INNOVATION

Arlon Electronic Substrates... Challenge Us

For samples, technical assistance, customer service or for more information, please contact Arlon Materials for Electronics Division at the following locations:

NORTH AMERICA:

Arlon LLC
Electronic Substrates
9433 Hyssop Drive
Rancho Cucamonga, CA 91730
Tel: (909) 987-9533
Fax: (909) 987-8541

Arlon LLC
Microwave Materials
1100 Governor Lea Road
Bear, DE 19701
Tel: (800) 635-9333
Outside U.S. & Canada: (302) 834-2100
Fax: (302) 834-2574

NORTHERN EUROPE:

Arlon LLC
44 Wilby Avenue
Little Lever
Bolton, Lancashire BL31QE
United Kingdom
Tel: (44) 120-457-6068
Fax: (44) 120-479-6463

SOUTHERN CHINA:

Arlon LLC
Room 601, Unit 1, Bldg 6
Liyuan, Xincun Shahe
Shenzhen, China 518053
Tel: (86) 755-269-066-12
Fax: (86) 755-26910475

NORTHERN CHINA:

Arlon LLC
Room 11/401, No. 8
Hong Gu Road
Shanghai, China 200336
Tel/Fax: (86) 21-6209-0202

SOUTHERN EUROPE:

Arlon LLC
6 cours des Juilliottes
94700 Maisons-Alfort France
Phone : (33) 1 84 23 41 51
Fax: (33) 9 55 62 43 26

www.arlon-med.com